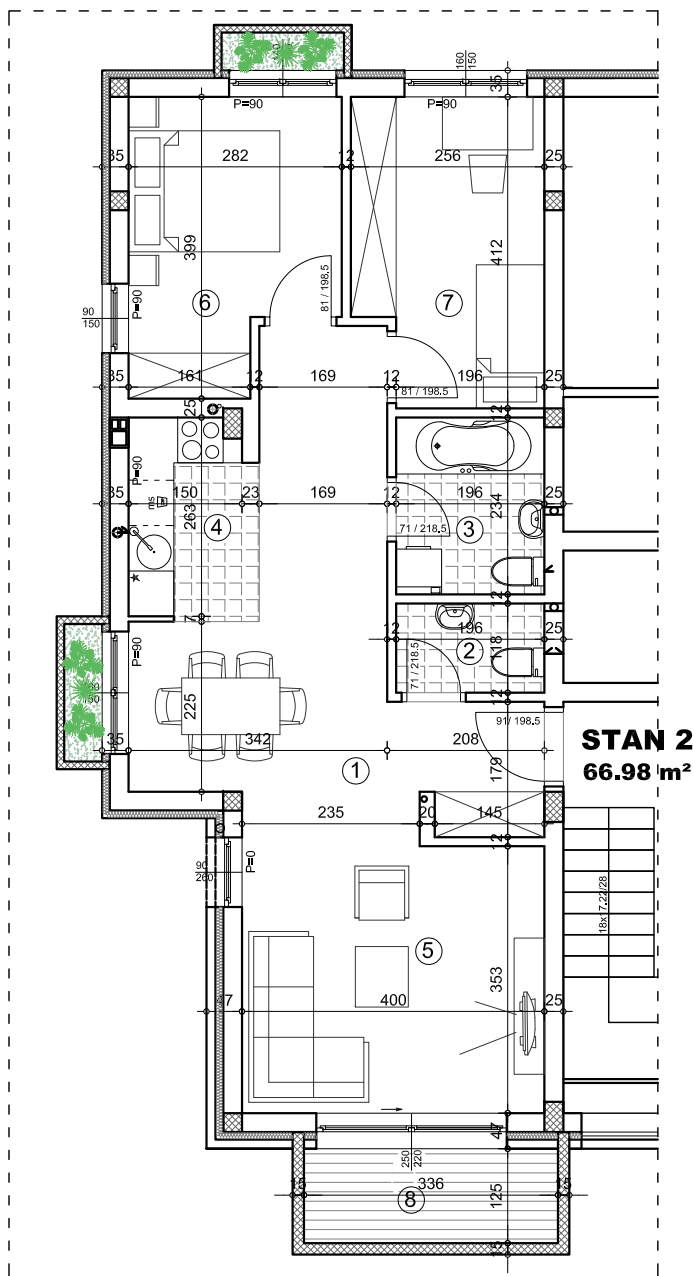


K22

OSNOVA STANA 1:100

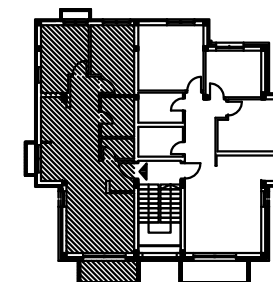


ulica Juraja Križanića 22

STAN 2 - trosoban

	pod	površina
1 ULAZ	parket	12.41 m ²
2 WC	ker.pl.	2.31 m ²
3 KUPATILO	ker.pl.	4.59 m ²
4 KUHINJA	ker.pl.	4.55 m ²
5 DNEVNA SOBA	parket	21.02 m ²
6 SOBA	parket	10.15 m ²
7 SOBA	parket	9.82 m ²
8 TERASA	ker.pl.	4.20 m ²
UKUPNO:		69.05 m²
UKUPNO REDUKOVANO -3%:		66.98 m²

OSNOVA 1.SP RATA



1.SP RATA / STAN 2