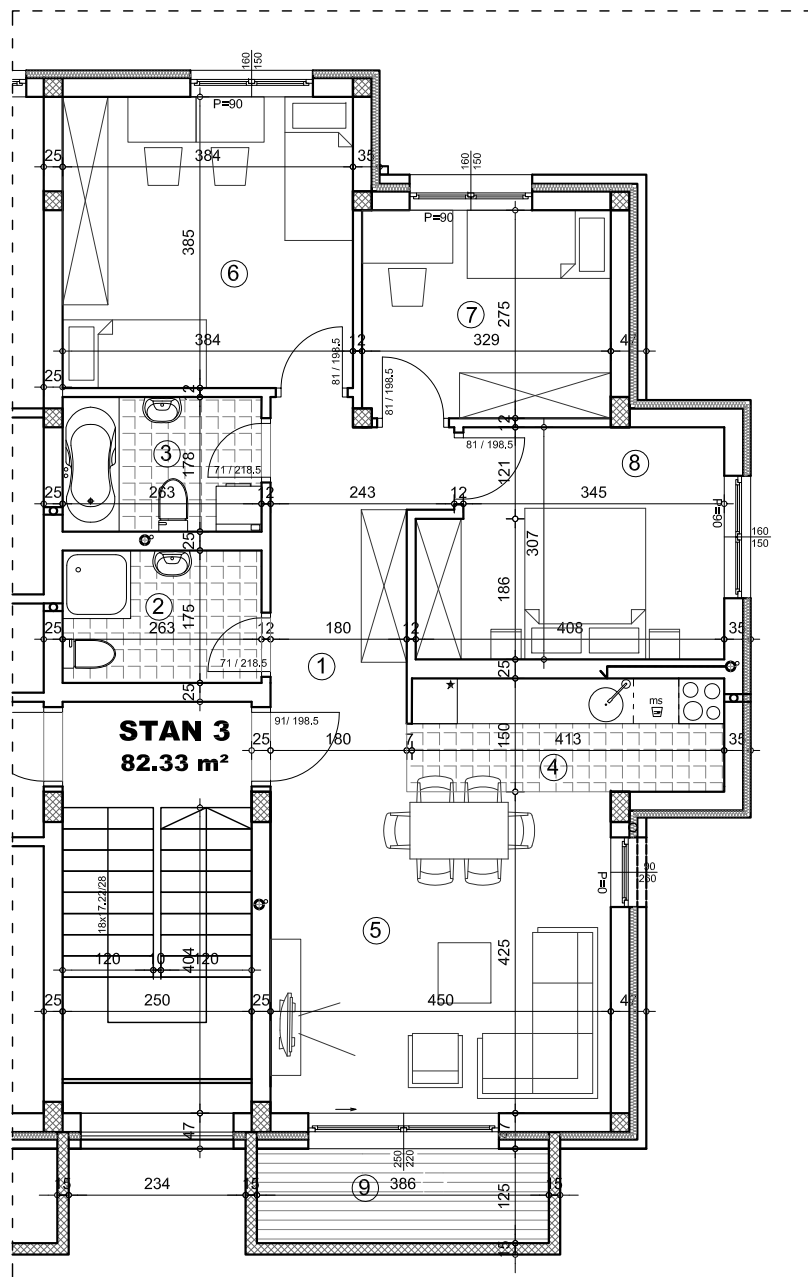


K22

OSNOVA STANA 1:100

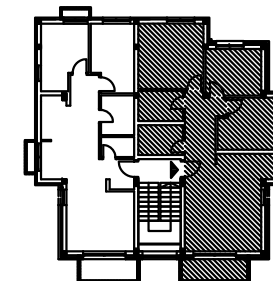


ulica Juraja Križanića 22

STAN 3 - četvorosoban

	pod	površina
1 ULAZ/HODNIK	parket	9.86 m ²
2 WC	ker.pl.	4.60 m ²
3 KUPATILO	ker.pl.	4.68 m ²
4 KUHINJA	ker.pl.	6.20 m ²
5 DNEVNA SOBA	parket	19.12 m ²
6 SOBA	parket	14.78 m ²
7 SOBA	parket	9.03 m ²
8 SOBA	parket	11.76 m ²
9 TERASA	ker.pl.	4.83 m ²
UKUPNO:		84.86 m²
UKUPNO REDUKOVANO -3%:		82.33 m²

OSNOVA 1.SPRATA



1.SPRAT / STAN 3