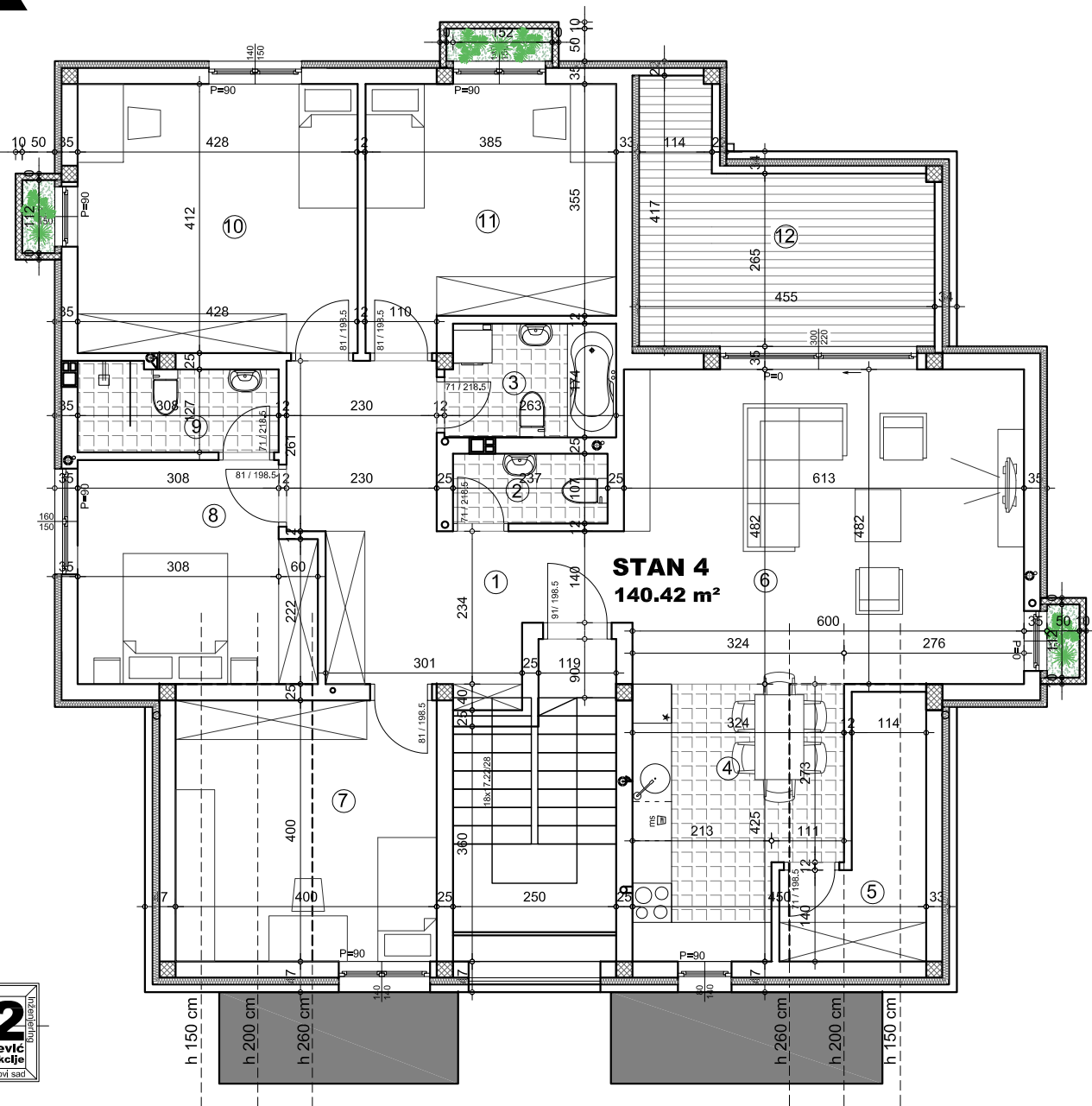


# K22

## OSNOVA STANA 1:100



biro  
**k2**  
PROJEKTOVANJE  
kovačević  
konstrukcije  
BEOGRAD  
NOVI SAD

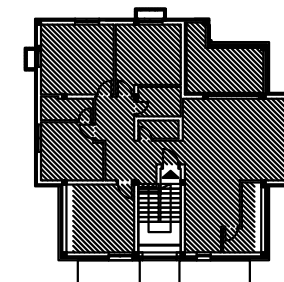
### STAN 4 - četvorosoban

	pod	površina
1 ULAZ/HODNIK	parket	15.84 m <sup>2</sup>
2 WC	ker.pl.	2.53 m <sup>2</sup>
3 KUPATILO	ker.pl.	4.49 m <sup>2</sup>
4 KUHINJA	ker.pl.	12.08 m <sup>2</sup>
5 OSTAVA	ker.pl.	4.63 m <sup>2</sup>
6 DNEVNA SOBA	parket	29.24 m <sup>2</sup>
7 SOBA	parket	14.42 m <sup>2</sup>
8 SOBA	parket	11.90 m <sup>2</sup>
9 KUPATILO	ker.pl.	4.04 m <sup>2</sup>
10 SOBA	parket	17.68 m <sup>2</sup>
11 SOBA	parket	14.26 m <sup>2</sup>
12 TERASA	ker.pl.	13.65 m <sup>2</sup>

**UKUPNO: 144.76 m<sup>2</sup>**

**UKUPNO REDUKOVANO -3%: 140.42 m<sup>2</sup>**

### OSNOVA POTKROVLJA



**ulica Juraja Križanića 22**

**POTKROVLJE / STAN 4**